

KARIBAN

REFERENCE : K401

SIZES : S_M_L_XL_XXL_3XL_4XL

COMPOSITION :

Fabric 1 : Softshell Polyester / Elastane woven 95/5 - 300 95% polyester / 5%elastane

WEIGHT :

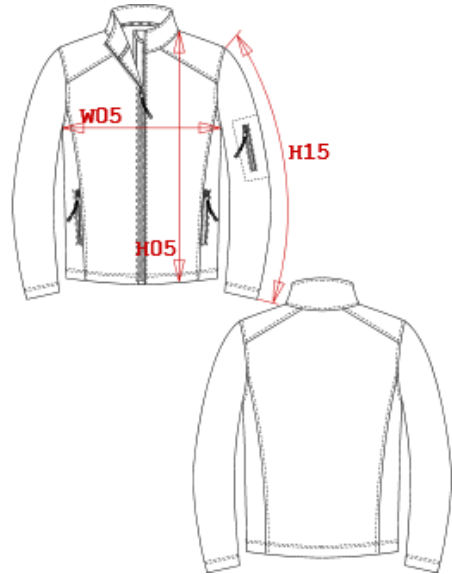
Fabric 1 : 300 gsm

FABRIC CONSTRUCTION AND FINISHING :

3 layers bonded (outer: 95%polyester 5%elastane / performance membrane / inner: microfleece polar) BR: 3000gsm/24h / WP: 8000mm

ARTICLE WEIGHT :

712 gr/pc



| DESCRIPTION | |
|---|--|
| Français : Veste homme softshell | |
| English : Soft shell jacket | |
| Nederlands : Heren soft shell | |
| Deutsch : Herren soft shell jacke | |
| Español : Chaqueta softshell para hombre | |
| Italiano : Giubbotto uomo softshell | |
| Português : Blusão softshell de homem | |

| COLORS | PANTONE SERIGRAPHIE |
|--------------------|---------------------|
| Black | Black |
| Navy | 296C |
| Red | 200C |
| Dark chocolate | Black 4C |
| White | White |
| Aqua blue | 7690C |
| Titanium | 7540C |
| Marl grey | - |
| Fluorescent yellow | - |
| Fluorescent orange | - |

| MEASUREMENT | | | | | | | |
|--|-------|-------|-------|-------|-------|-------|-------|
| Description | S | M | L | XL | 2XL | 3XL | 4XL |
| W05 1/2 largeur poitrine avec zip / 1/2 chest width with zipper | 53,50 | 56,50 | 59,50 | 62,50 | 65,50 | 69,50 | 73,50 |
| H05 Hauteur totale devant / Front total height | 72,15 | 74,15 | 76,15 | 78,15 | 80,15 | 82,90 | 85,65 |
| H15 Longueur dessus de manche / Sleeve length | 64,10 | 66,10 | 68,10 | 70,10 | 72,10 | 74,75 | 77,50 |

| CARE LABEL | | | | |
|------------|--|--|--|--|
| | | | | |

| PACKING | |
|---------|--|
| Box | 10 pcs / box S => L:57cm W:37.5cm H:19cm GW:8.5kg NW:7kg M => L:57cm W:37.5cm H:19cm GW:8.5kg NW:7kg L => L:57cm W:37.5cm H:19cm GW:8.5kg NW:7kg XL =>L:64cm W:37.5cm H:19cm GW:9.50kg NW:8.00kg XXL =>L:64cm W:37.5cm H:19cm GW:9.50kg NW:8.00kg 3XL =>L:68cm W:45cm H:19cm GW:10kg NW:8.5kg 4XL =>L:70cm W:43cm H:19cm GW:10.5kg NW:9kg |